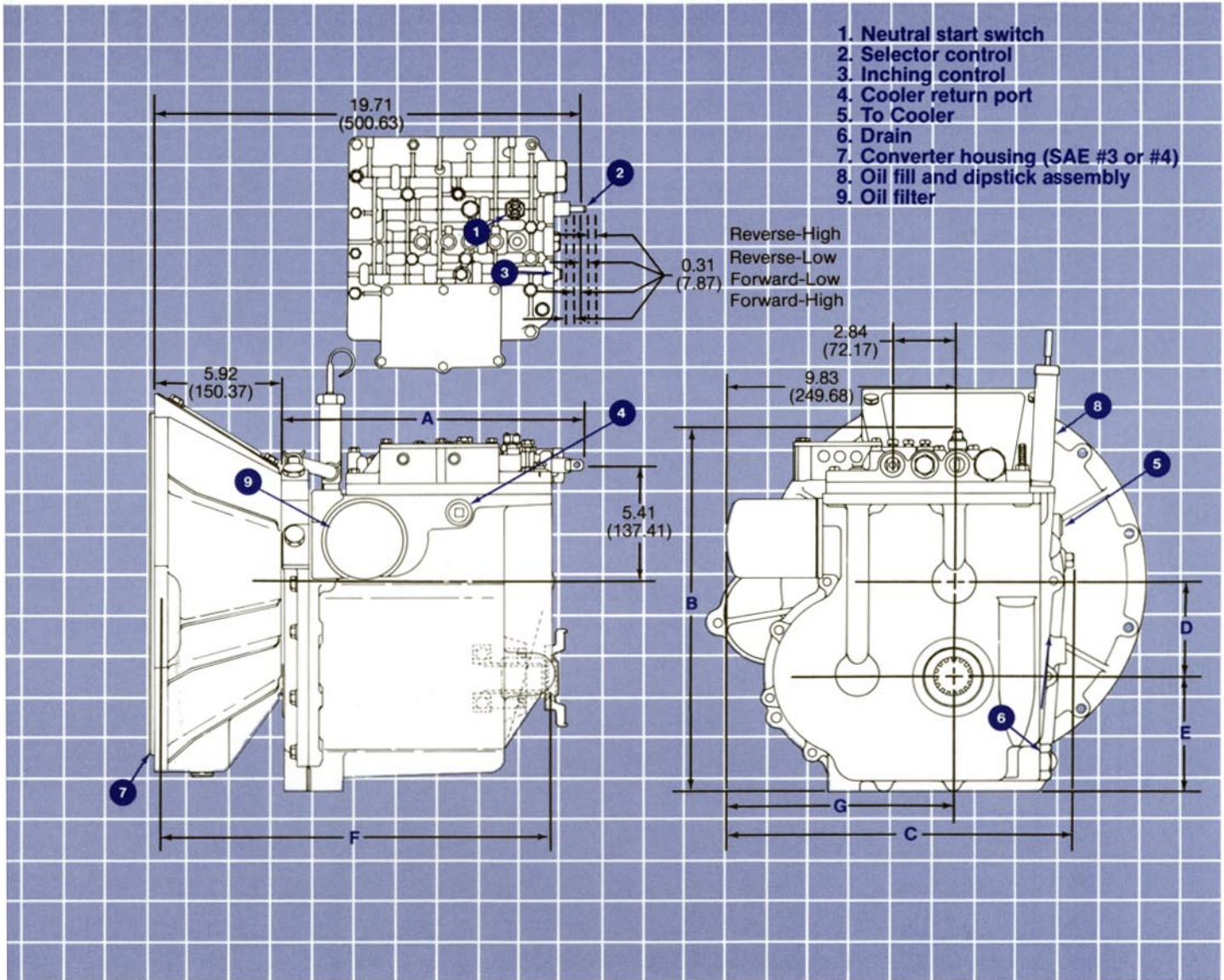


PR2 Heavy Duty Assemblies



PR2 Heavy Duty Dimensions inches (millimeters)

Dim. A	Dim. B	Dim. C	Dim. D	Dim. E	Dim. F	Dim. G
14.10 (358.14)	16.86 (428.24)	16.19 (411.23)	4.51 (114.55)	5.44 (138.18)	16.32 (414.53)	10.40 (264.16)

PR2 Heavy Duty Specifications nominal (subject to change without notice)

Ratio* high	0.97:1
low	1.84:1
Weight (dry, less converter)	274 lbs. (124.3 kg)
Controls, selector	mechanical
inching	mechanical
Spline, input	29 tooth, external involute
output	19 tooth, internal involute, flat root, side fit 16/32 D.P., 30° P.A., 1.1875 P.D.
Oil filter	standard

*For other ratio possibilities contact Velvet Drive Transmissions.